

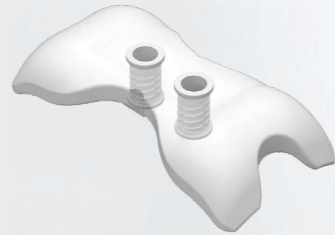
Setting Implant Location Simply and Precisely Without CT Photographing

Smart Guide KIT



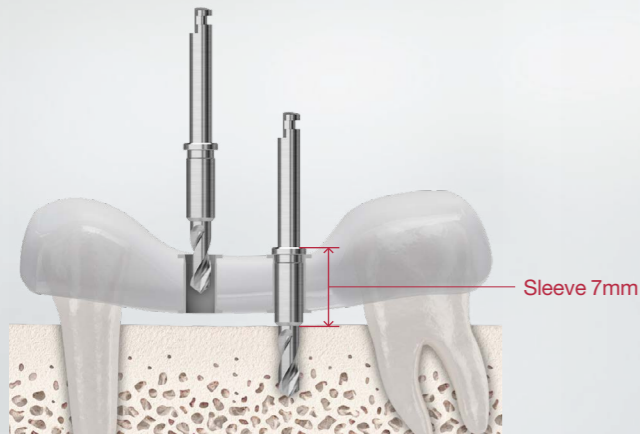
3D Pre-Formed Design (Osstem Patent)

- Smart guide facilitates guide manufacturing through 3D forming in order to make it fit well on various types of teeth defect areas



Enough Sleeve Length

- Long sleeve length enables to maintain precise drilling path in drilling

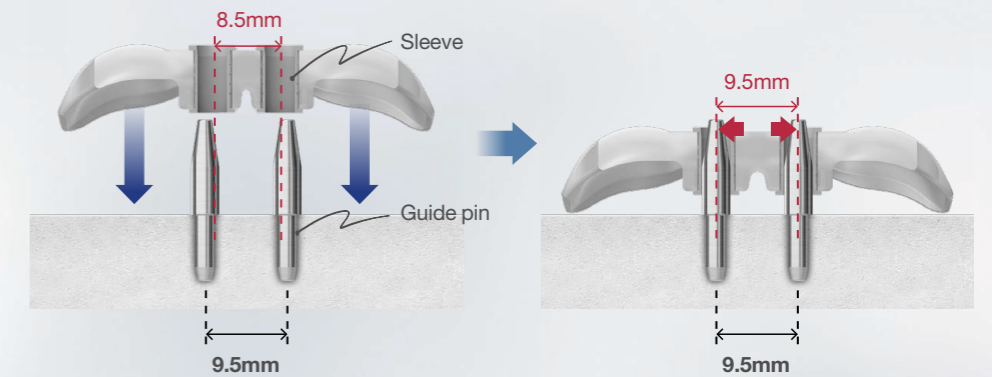


Self Adjusting Sleeve & Guide Pin

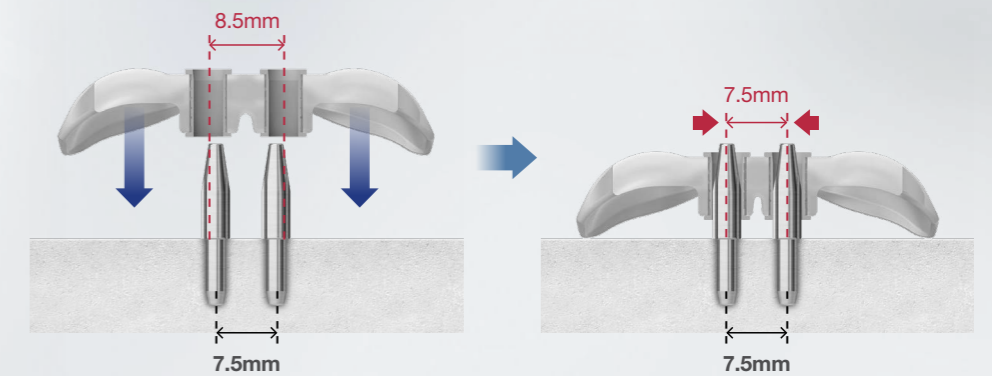
- Connecting smart guide with guide pin enables to keep the distance by 1mm automatically.

Examples of Using Large Guide

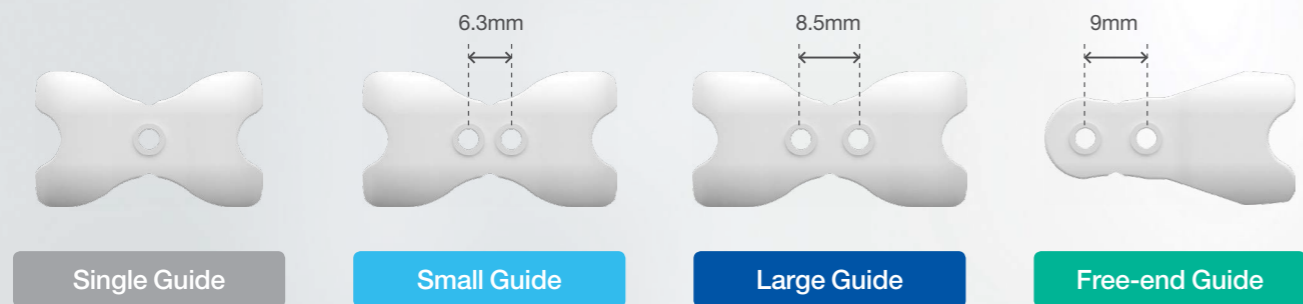
① Distance 9.5mm



② Distance 7.5mm

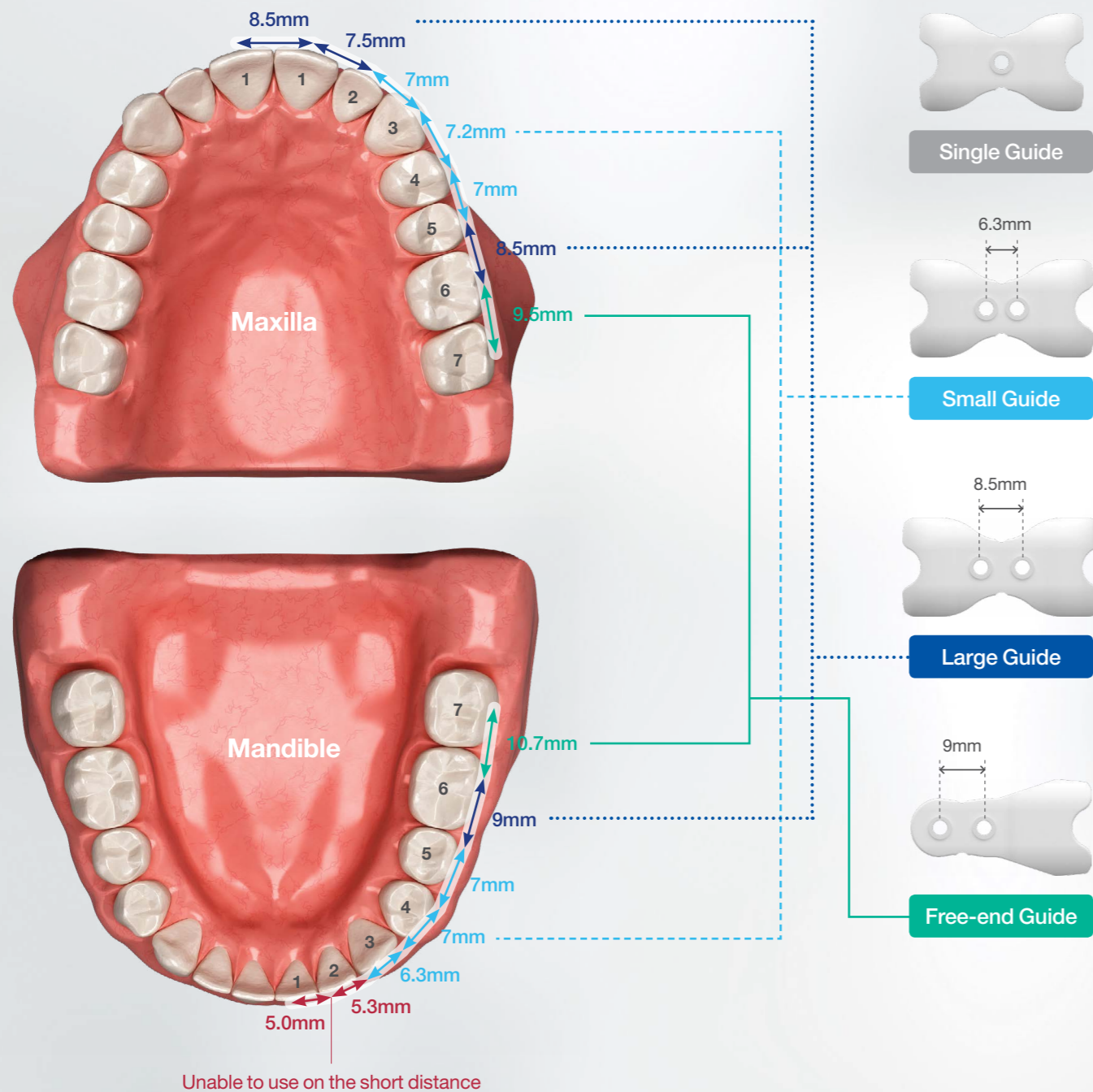


Smart Guide KIT Tools



Smart Guide KIT

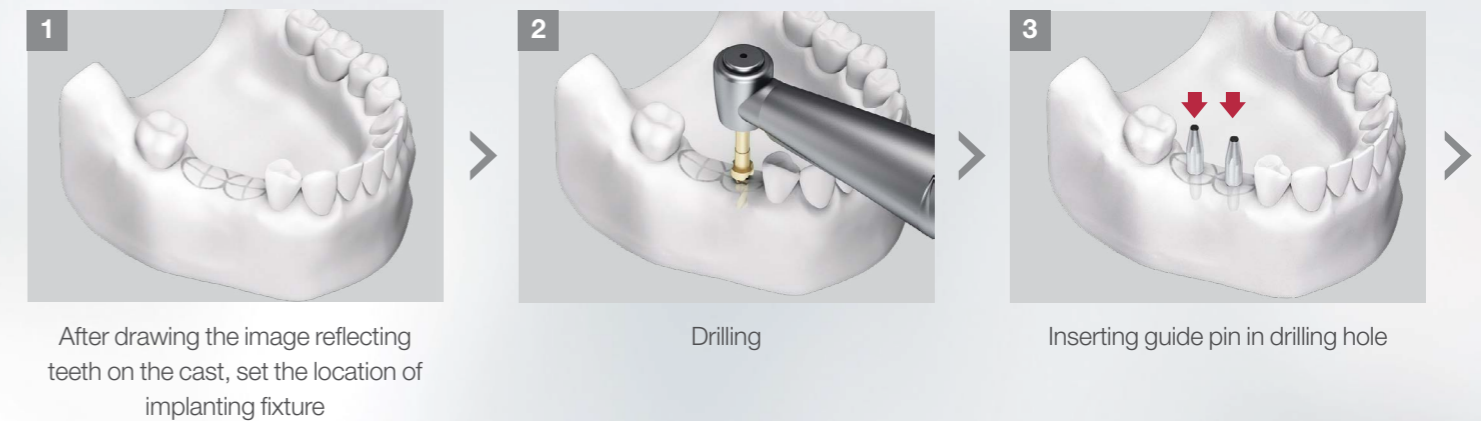
Smart Guide User Guide



How to Use

※ As Smart guide is packed in non-sterile, it is required to use after immersing in alcohol or hexamedine – Impossible with high temperature autoclave or hydrogen peroxide

Lab Process Plaster Cast



Clinic Process in The Mouth

