

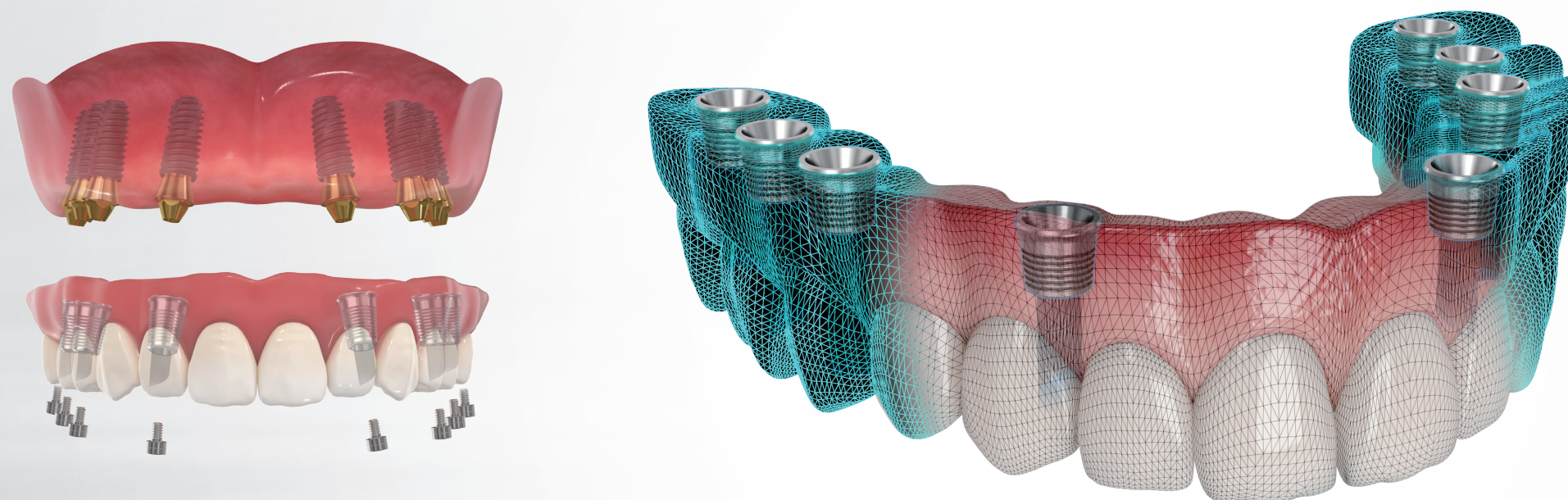
Convenient digital screw-retained Implant prosthesis solution

TS Multi Ti Base

- Perfect Passive Fit in a totally edentulous case
- Powder free-scannable metal Scan Body
- Full line up for various clinical environments
- Convenient digital workflows with official libraries

Perfect passive fit in a totally edentulous case

- Used with TS Multi abutment to tighten prosthesis and implant at the Tissue level
- Precision prosthesis produced through digital 3D printing, milling

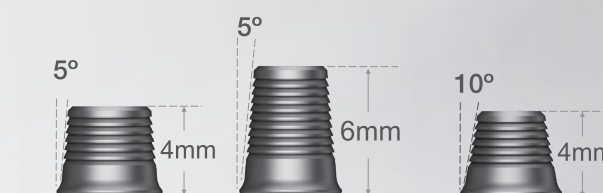


Full line up for various clinical environments

- Selectable between 17/30° Multi angled abutment and G/H 1/2/3/4/5mm TS Multi abutment
- Selectable 4/6mm Ti Base according to the VD of the round material, 10° Ti Base for temporary prosthesis

For Final

For Temporary

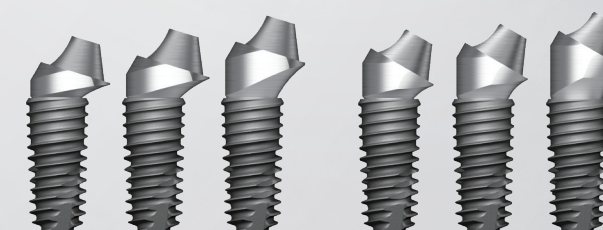


Multi ABT.



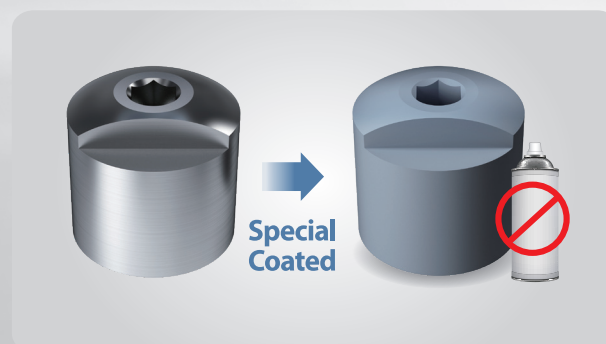
Multi angled Abutment(17°)

Multi angled Abutment(30°)

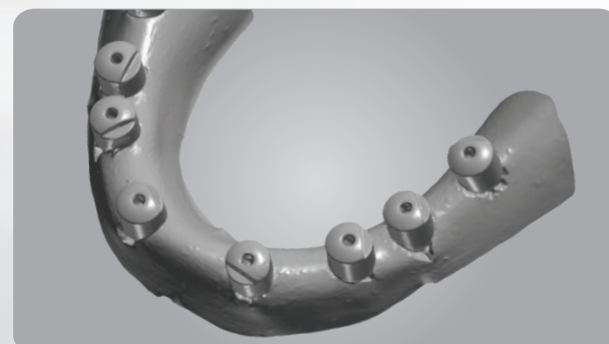


Powder free-scannable metal Scan Body

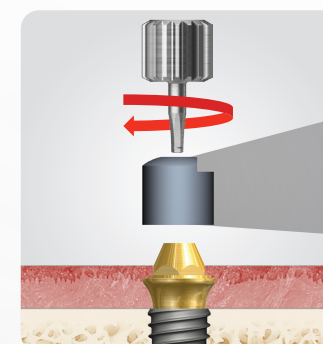
- Special coating treatment allows rapid mouth scanning without powder
- All-in-one structure that can be conveniently fastened with one hand



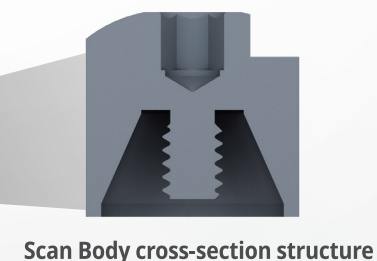
Special coating Scan Body without light reflection



Fast scan even for full edentulous cases



Screw integral Scan Body



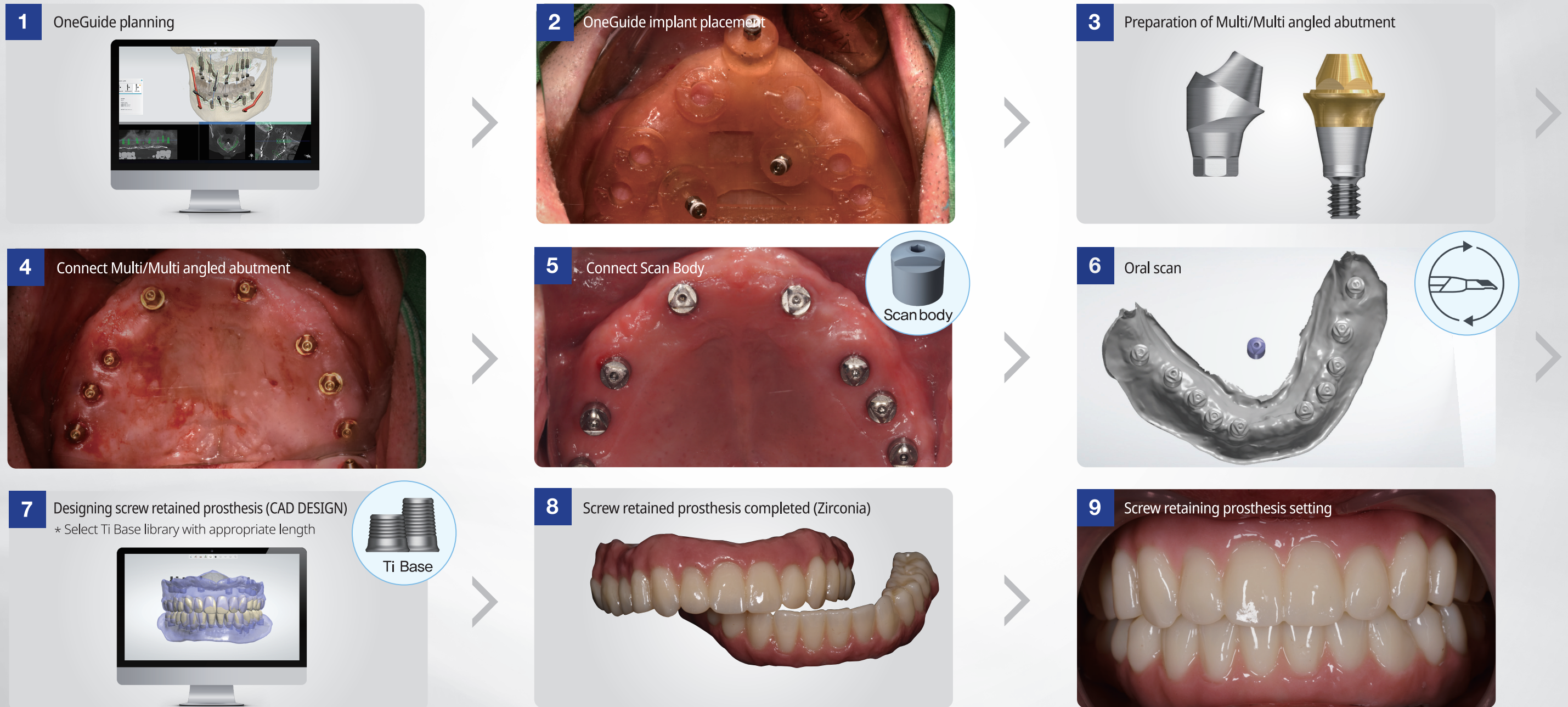
Scan Body cross-section structure

Convenient digital screw-retained Implant prosthesis solution

TS Multi Ti Base

Convenient digital workflows with official libraries

- Osstem official Scan Body-Ti Base library provided for 3shape, ExoCAD
- New implant prosthetic treatment optimized for full edentulous cases in 100% digital method



* Clinical data : Provided by Dr. Jae-min Lee of MIRAERO Dental Clinic (Korea)