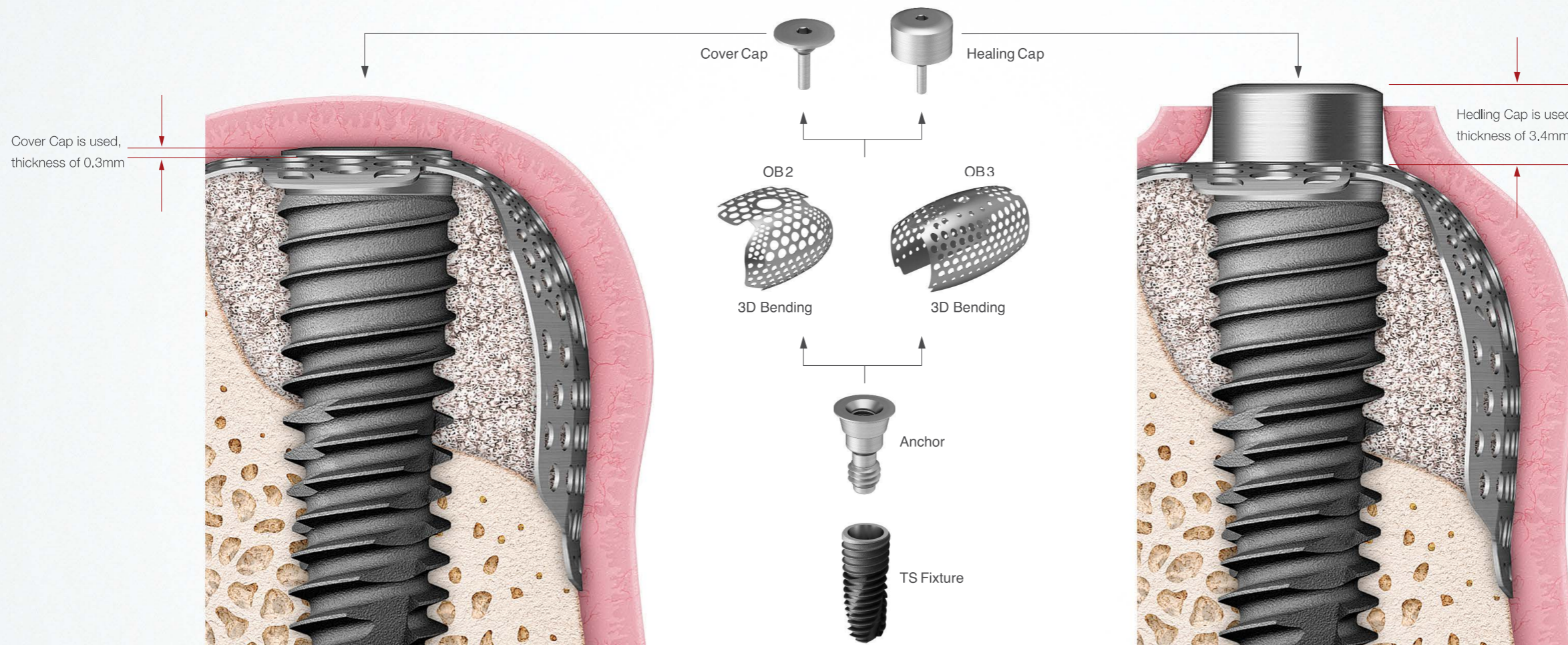


Oss Builder

- 3D design does not require trimming or bending which improves surgery convenience
- Minimal exposure of membrane during Bone healing period
- Minimal Gingiva incision for membrane removal shortens recovery period

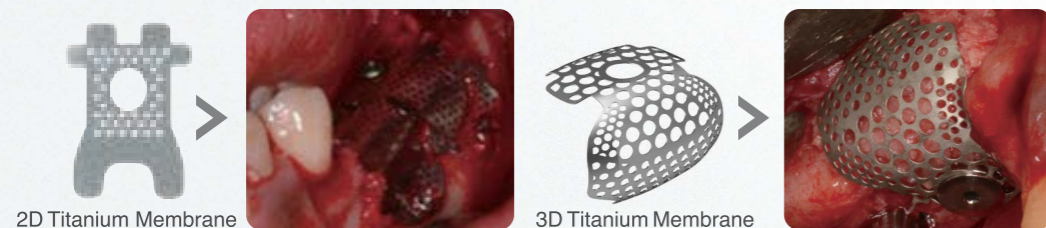


Patients with sufficient soft tissue

Patients with insufficient soft tissue

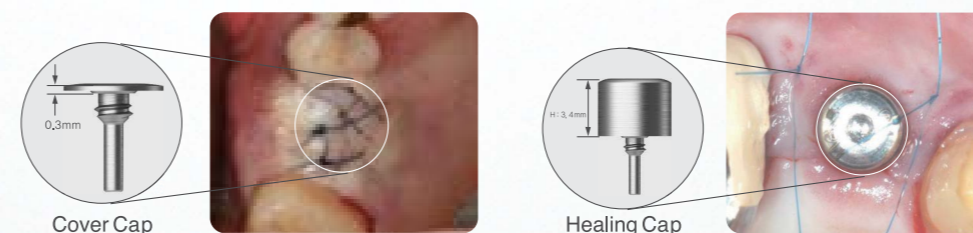
3D Design Does Not Require Trimming or Bending

- 3D Pre-formed Design improves procedure convenience
- Line up for various clinical cases



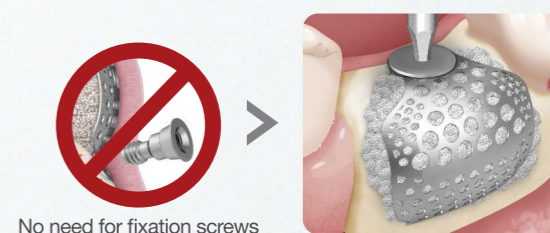
Minimal Exposure of Membrane During Bone Healing Period

- Suturing with Cover Cap H: 0.3mm minimizes the possibility of exposure
- Healing Caps for non-submerged procedure for patients with insufficient soft tissues

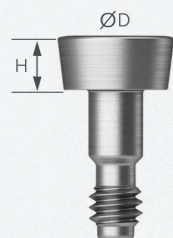


Minimal Gingiva Incision for Membrane Removal Shortens Recovery Period

- Round design and strong rigidity enables maintaining its form without fixation screws
- Secondary surgery can be performed with minimal incision

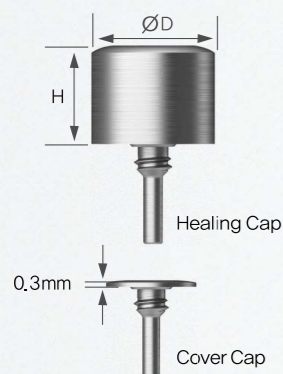


Anchor



- Prevents influx of foreign materials into the implant and secures space for Bone graft
- Compatible with products from major Korea Implant Manufacturers
- 4 sorts of 3.5 Mini and 4.0 Regular Anchors each (H : 0, 0.5, 1.0, 1.5mm)

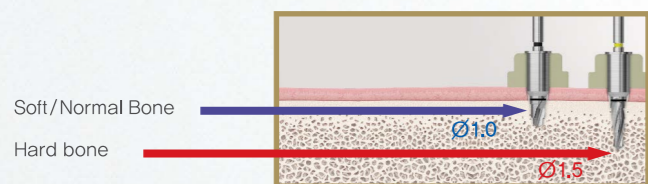
Healing/Cover Cap



- Cap that fixes OB and anchor
- Healing cap for non-submerged surgery is used for patients with insufficient soft tissue
- Healing cap for submerged surgery is used for patients with sufficient soft tissue
- Healing Cap (4.0, 5.0, H : 3, 4mm), one size for Cover Cap

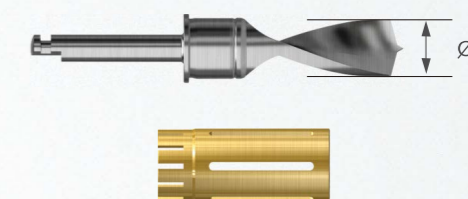
Tenting Screw Drill/Tenting Screw

- Acts as a supporting pillar in cases when implant cannot be placed
- In case of Soft & Normal Bone, drill 3mm; in case of Hard Bone drill 5mm and place Tenting screw
- Drill : 1.0, 1.5 1ea, Tenting Screw : L 8.5, 10, 11.5, 13



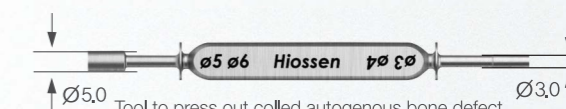
Auto Bone Collector

- Tool to collect autogenous bone
- Maximum length of 4mm can be drilled, 500 rpm is recommended
- Default : 5.0, 6.0, Option : 3.0, 4.0



Bone Eject/Defect Gauge

- Tool to press out collected autogenous bone / Tool to measure defects

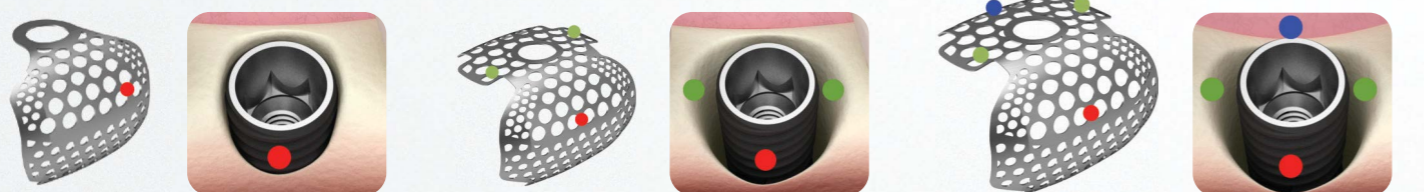


Driver

- 0.9 Hex allows connection of all components

OssBuilder Selection

OB2 Small horizontal or vertical bone augmentation



OB21 wall Buccal damage OB22 wall Buccal+Proximal damage OB23 wall Buccal+Proximal+Lingual damage

OB3 Large (>10 mm) horizontal or vertical bone augmentation



Used for defects of maximum horizontal length of 20 mm